



Baby Jungle

Finished size 51" x 51" (1.3m x 1.3m)

Designed by Lynne Goldsworthy of lilysquilts.blogspot.com
using the Baby Jungle collection from Makower UK www.makoweruk.com




Quilt Front

Quilt Back



makower uk

Unit 14, Cordwallis Business Park, Clivemont Road,
Maidenhead, Berkshire SL6 7BU +44(0)1628 509640
info@makoweruk.com www.makoweruk.com

 **andover**



FABRIC REQUIREMENTS

Sku	Description	Quantity	Cut
1730/1	Blocks (Border)	35cms / 13" (five strips of blocks)	Five strips of blocks. Sew end to end and cut into four strips as described at step 8 of the pattern.
1731/1	Scenic	Fat 1/8	Nine 3 1/2" squares
1732/Q	Elephants	Fat 1/4	Four 5 1/2" squares
1733/Q	Alphabet	30cms / 11"	Twelve 5 1/2" squares
1735/Q	Chalk Stripe	1/2 m / 1/2 yd	One 4 1/2" square and six 4" squares Five 2 1/2" WOF strips (for binding)
1736/1	Panel	1.2m / 48" (2 panels)	One double panel
830/T3	Spot (Teal)	20cms / 6"	Four 1 1/2" WOF strips cut into eighteen 1 1/2" x 3 1/2" and eighteen 1 1/2" x 5 1/2" strips
830/Y6	Spot (Sand)	1/4 metre / 1/4 yard	Five 1 1/2" WOF strips cut into twelve 1 1/2" x 4", two 1 1/2" x 4 1/2", twelve 1 1/2" x 6" and two 1 1/2" x 6 1/2" strips
2000/W02	Spectrum	2 1/4 m / 2 1/2 yds	Ten 1 1/2" WOF strips cut into thirty-two 5 1/2" lengths, two 8" lengths, two 20 1/2" lengths, two 32 1/2" lengths and two 44 1/2" lengths Nine 3 1/2" WOF strips sewn end to end and cut into two 35", two 41", two 45" and two 51" lengths Five 7 1/2" WOF strips sewn end to end and cut into two 43" and two 57" lengths Optional 1" WOF strip (see making the back step 1)
	Wadding		1.5m square / 59" square

Notes

- Read the pattern in full before starting.
- 1/4" seams are used throughout except where stated otherwise.
- Press after each seam, pressing seams open or to one side as preferred.
- WOF = width of fabric – a strip of fabric cut from selvedge to selvedge.
- Make sure to visit <http://www.makoweruk.com/projects/> to ensure you are working from the most up-to-date version of the pattern.

Cutting

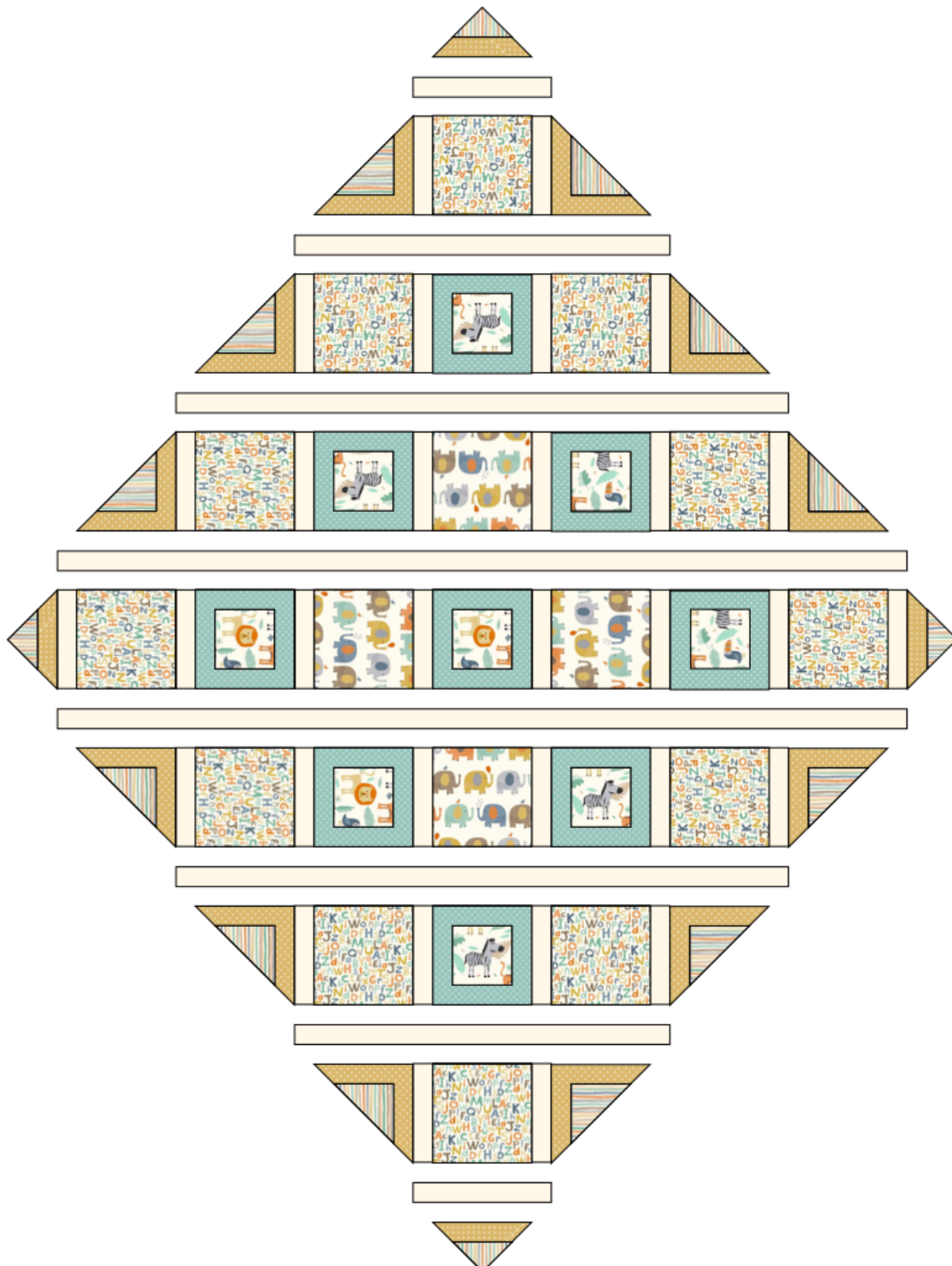
Cut the fabrics as set out in the fabric requirements schedule.

Making The Front Of The Playmat

1. Sash the sides of the 3 1/2" scenic squares with the 1 1/2" x 3 1/2" teal spot strips then the top and bottom with the 1 1/2" x 5 1/2" strips.
2. Sash the 4" chalk stripe squares with the 1 1/2" x 4" sand spot strips then the top and bottom with the 1 1/2" x 6" strips.
3. Sash the 4 1/2" chalk stripe square with the 1 1/2" x 4 1/2" sand spot strips then the top and bottom with the 1 1/2" x 6 1/2" strips.
4. Cut the sashed 4" chalk strip squares in half on the diagonal and the sashed 4 1/2" chalk stripe square into four quarters by cutting on both diagonals.

5. Sew the centre of the playmat top into nine rows as follows and as shown in the diagram below:

- Rows 1 and 17: one chalk stripe quarter square triangle sashed with sand spot;
- Rows 3 and 15: two chalk stripe half square triangles sashed with sand spot, one alphabet fabric 5 1/2" square and two 1 1/2" x 5 1/2" cream spectrum strips;
- Rows 5 and 13: two chalk stripe half square triangles sashed with sand spot, two alphabet fabric 5 1/2" squares, one scenic square sashed with teal spot and four 1 1/2" x 5 1/2" cream spectrum strips;
- Rows 7 and 11: two chalk stripe half square triangles sashed with sand spot, two alphabet fabric 5 1/2" squares, two scenic squares sashed with teal spot, one elephants 5 1/2" square and six 1 1/2" x 5 1/2" cream spectrum strips; and
- Row 9: two chalk stripe quarter square triangles sashed with sand spot, two alphabet fabric 5 1/2" squares, three scenic squares sashed with teal spot, two elephants 5 1/2" squares and eight 1 1/2" x 5 1/2" cream spectrum strips.



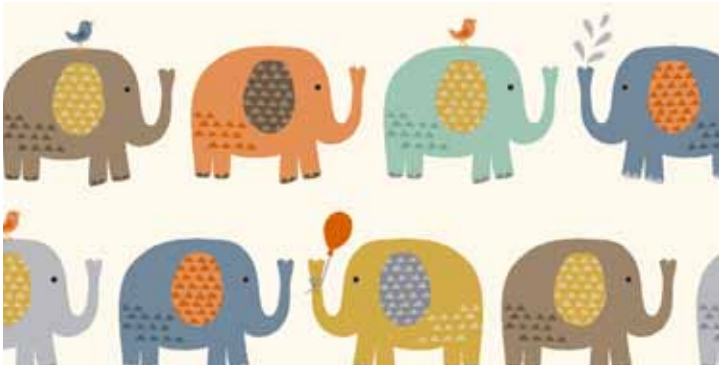
6. Sew the quilt top together with the following cream spectrum 1 ½" wide sashing strips:
 - Rows 2 and 16: 8";
 - Rows 4 and 14: 20 ½";
 - Rows 6 and 12: 32 ½";
 - Rows 8 and 10: 44 ½".
7. Trim away the corners of the cream strips – the quilt top should now measure 35" square.
8. Sash the sides of the quilt top with the 3 ½" x 35" strips then the top and bottom with the 3 ½" x 41" strips.
9. Cut the strips of blocks into two strips of seventeen blocks. NB: the ends of these strips should be cut to ¼" beyond the edge of the blocks. Cut the remainder into two strips of fifteen blocks. NB: the ends of these strips should be cut to ½" beyond the edge of the blocks.
10. Sash the sides of the quilt top with the strips of fifteen blocks then the top and bottom with the strips of seventeen blocks.
11. Sash the sides of the quilt top with the 3 ½" x 45" strips then the top and bottom with the 3 ½" x 51" strips to finish the quilt top.

Making The Back Of The Playmat

1. If you have two separate panels, sash together with the 1" WOF strip of cream spectrum fabric between the two panels. Trim the whole thing (whether it was one double panel or two panels sewn together) to ½" away from the printed design.
2. Sash the sides of the panel(s) with the 7 ½" x 43" cream strips then the top and bottom with the 7 ½" x 57 ½" cream strips.

Finishing The Quilt

1. Sew the binding strips end to end using diagonal or straight seams as preferred and press wrong sides together along the length to make a double fold binding.
2. Make a quilt sandwich, basting together the quilt back, the wadding and the quilt top.
3. Quilt as desired then trim the quilt square, removing excess wadding and backing. We quilted a cross hatch of wavy lines approximately 2" apart using an Aurifil 50wt cream thread.
4. Bind the quilt taking care to mitre the corners.



1732/Q Elephants



1732/B Elephants



1731/1 Scenic



1735/Q Chalk Stripe



1730/1 Blocks



1733/Q Alphabet



1734/Q Triangles



1734/B4 Triangles



1733/B Alphabet



1736/1 Panel

Actual size shown
60 x 11 cms (24" x 44")

ALL DESIGNS 50% OF ACTUAL SIZE



Reversible Baby Jungle

Finished size 50" x 50" (1.3m x 1.3m)
Designed by Lynne Goldsworthy of lilysquilts.blogspot.com
Free instructions available to download December 16
www.makoweruk.com